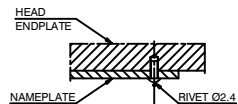
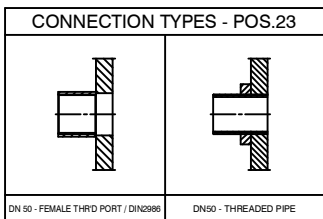
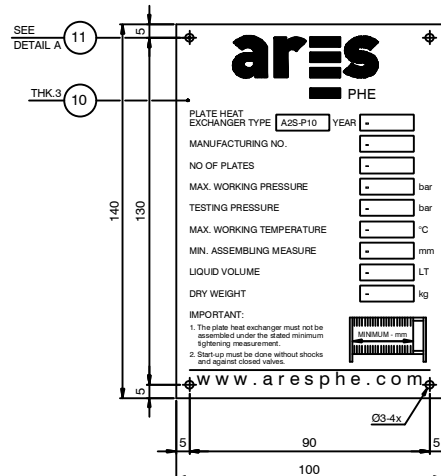


ISO VIEW



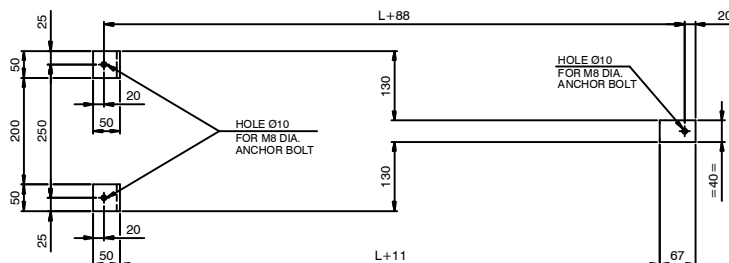
DETAIL A

SCALE: 1/1

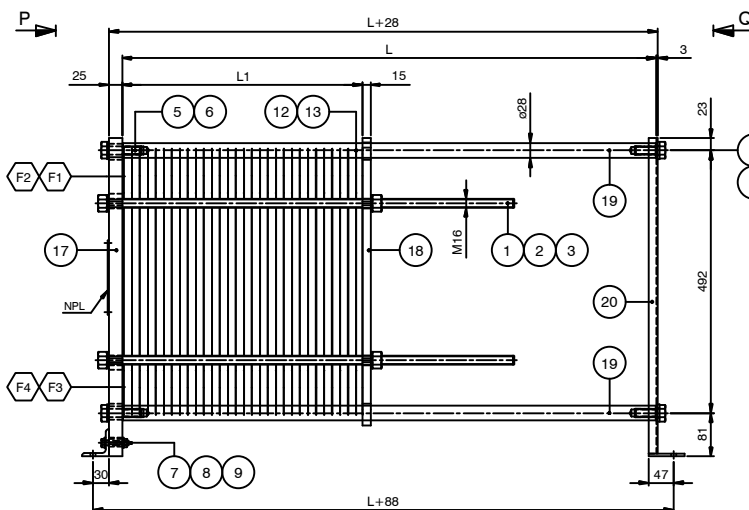


DETAIL NAMEPLATE

SCALE: 1/1

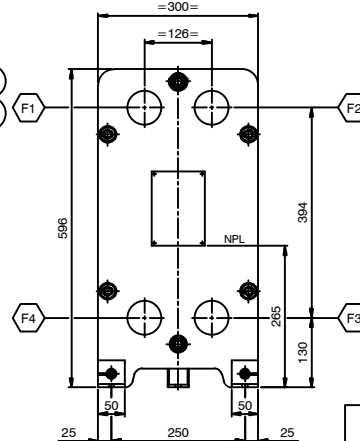


FOUNDATION PLAN



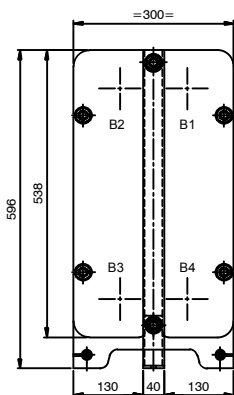
ELEVATION

SCALE: 1/5



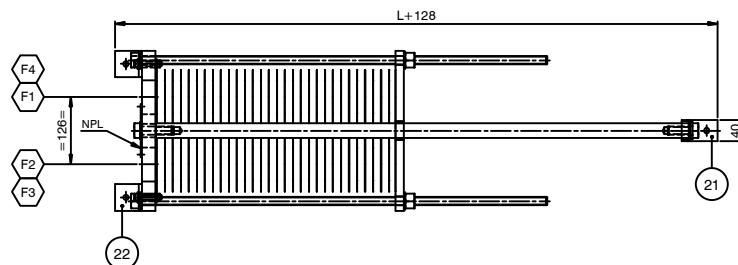
VIEW P

SCALE: 1/5



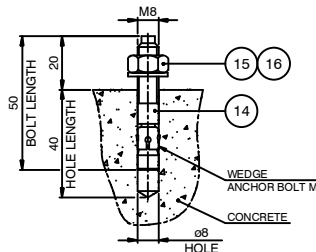
VIEW Q

SCALE: 1/5



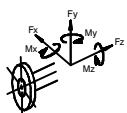
TOP VIEW

SCALE: 1/5



DETAIL ANCHOR BOLT

SCALE: 1/1



NOZZLE	Forces (N)			Moments (Nm)		
	Longitud. Fy	Circum. Fx	Axial Fz	Longitud. Mx	Circum. My	Torsional Mz
F1, F2, F3, F4	186	186	186	74	74	74

NOZZLE LOADS ACCORDING TO API 682, TABLE 1

	FOUNDATION LOADS	
	FRONT SIDE (N)	REAR SIDE (N)
DEAD LOAD (DL)	1327.1	467.5
OPERATING LOAD (DL+ NOZZLE LOAD)	2566.2	963.1

DESIGN DATA

DESIGN ACC. TO	AD 2000 - Merkblatt / PED 97/23/EG	
MEDIUM	-	
CATEGORY	SEP	
OPERATING DATA	HOT SIDE	COLD SIDE
PRODUCT	-	-
TEST PRESSURE (AD2000 / PED)	Barg	- / -
MIN. / MAX. ALL. PRESSURE (PS)	Barg	- / -
MIN. / MAX. ALL. TEMPERATURE (TS)	°C	- / -
CONTENT (V)	L	-
HE-SURFACE	m²	-
WEIGHT NETTO	kg	-
INLET TEMPERATURE	°C	-
OUTLET TEMPERATURE	°C	-

LENGTH OF PACK	a _{max} = L1
	a _{min} = L1
LENGTH OF CARRY BAR	b = L

NOZZLE CONNECTIONS

POS	DIR	MEDIA	TYPE	
F1	IN	HOT SIDE	-	50
F2	OUT	COLD SIDE	-	50
F3	IN	COLD SIDE	-	50
F4	OUT	HOT SIDE	-	50

REFERENCE DRAWINGS & DOCUMENTS

DESCRIPTION	ARES PHE DRAWING
DETAILS	A2S-10010-02
CALCULATION	A2S-10010-00-CAL

GENERAL NOTES

- ALL DIMENSIONS ARE IN mm UNLESS OTHERWISE STATED
- FLANGE BOLTHOLES STRADDLE CENTERLINES
- NOZZLE FLANGE FACES SMOOTH FINISH 3.2-6.4 um Ra
- ROUGHNESS OF GASKETS SURFACE SHALL BE Ra 3.2...6.3 um MAX, UNLESS NOTED OTHERWISE

NO	REV	DATE	HE	FOR APPROVAL	DESCRIPTION	QTY	DESCRIPTION	DIMENSIONS	MATERIAL	REMARKS	CERT
23	4				NOZZLE CONNECTION	-	-	-	-	-	3.1
22	2				ANGLE	L50x50x6 L=50	S235JR	-	-	-	-
21	1				BASE PLATE	67x40x5	S235JR	-	-	-	-
20	1				SUPPORT COLUMN	591x68x3	S235JR	-	-	-	-
19	2				CARRY/GUIDE BAR	Ø28	S235JR	-	-	-	-
18	1				FOLLOWER ENDPLATE	538x300x15	S355J2G3	-	-	-	3.1
17	1				HEAD ENDPLATE	596x300x25	S355J2G3	-	-	-	3.1
16	3				FLAT WASHER	M8	CS	-	-	-	-
15	3				NUT	M8	.B	-	-	-	-
14	3				WEDGE ANCH. BOLT	M8 L=50	8.8	-	-	-	-
13	-				GASKET	-	-	-	-	-	-
12	-				HE PLATE	-	-	-	-	-	3.1
11	4				RIVET	Ø2.4 L=8	SS	-	-	-	-
10	1				NAMEPLATE ARES	140x100x3	SS	-	-	-	-
9	4				WASHER	M8	CS	-	-	-	-
8	2				HEX NUT	M8	.B	-	-	-	-
7	2				BOLT	M8x45	8.8	-	-	-	-
6	2				BOLT	M16x65	8.8	-	-	-	-
5	4				WASHER	M16	CS	-	-	-	-
4	2				BOLT	M16x45	8.8	-	-	-	-
3	8				WASHER	M16	CS	-	-	-	-
2	8				HEX NUT	M16	.B	-	-	-	-
1	4				DOUBLE-END STUD	M16	8.8	-	-	-	3.1
Item	qty	description	dimensions	material	remarks	cert					

PART LIST

Designed by	Date	Approved by	Date	Rev. no.	Revision Text	Format	Scale
ARES		ARES		0	FOR APPROVAL	A1	1:5+VAR.
Description:				PHE MODEL: A2S PN10 L=100 ÷ 1000 MM			
GENERAL ARRANGEMENT				Rev. date			
Rev. by				Drawing no.			
18-06-12				HE			
A2S-10010-01				Sheet			
1 OF 1							

