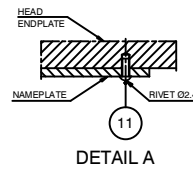
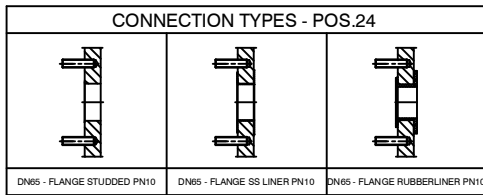
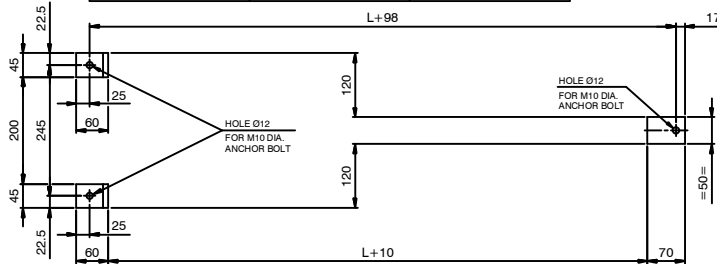


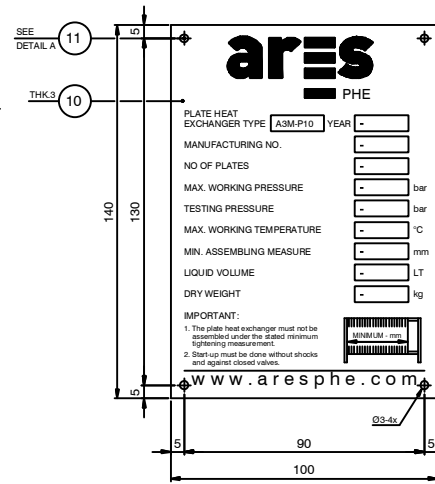
ISO VIEW



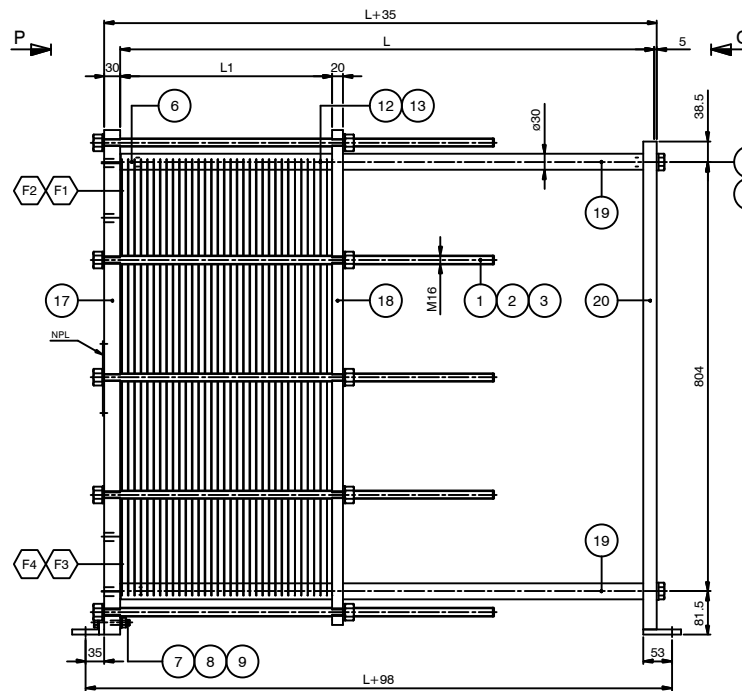
DETAIL A  
SCALE: 1/1



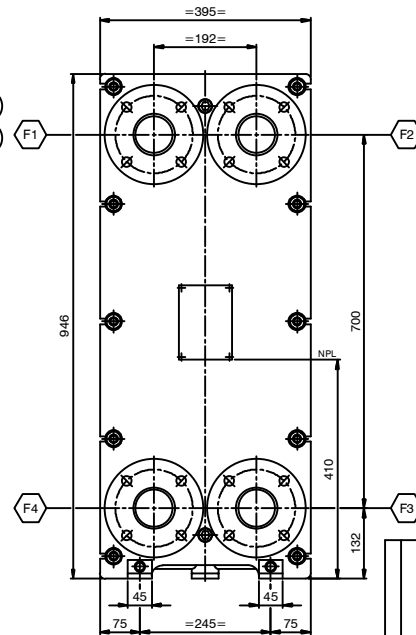
FOUNDATION PLAN  
SCALE: 1/1



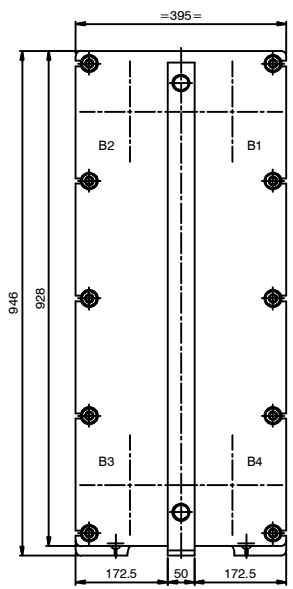
DETAIL NAMEPLATE  
SCALE: 1/1



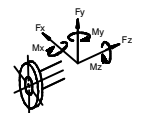
ELEVATION  
SCALE: 1/5  
L+140



VIEW P  
FRONT SIDE  
SCALE: 1/5



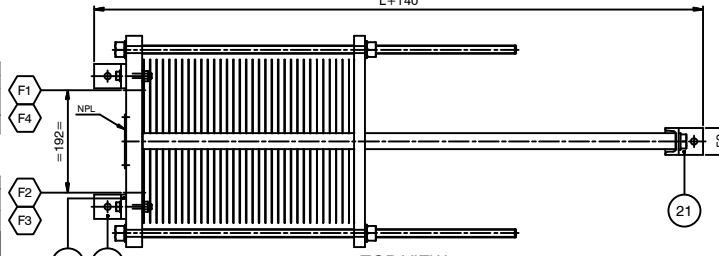
VIEW Q  
REAR SIDE  
SCALE: 1/5



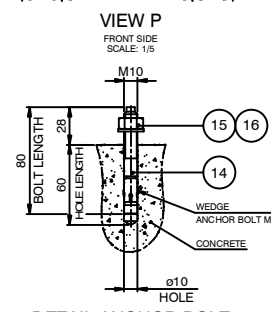
MAX. ALLOWABLE FORCES and MOMENTS ON NOZZLES						
NOZZLE	Forces (N)			Moments (Nm)		
	Longitud.	Circum.	Axial	Longitud.	Circum.	Torsional
F1,F2,F3,F4	255	255	255	143	143	143

NOZZLE LOADS ACCORDING TO API 662, TABLE 1

	FOUNDATION LOADS	
	FRONT SIDE (N)	REAR SIDE (N)
DEAD LOAD (DL)	2846.3	919.5
OPERATING LOAD (DL+NOZZLE LOAD)	4883.3	1887.9



TOP VIEW  
SCALE: 1/5



DETAIL ANCHOR BOLT  
SCALE: 1/2

DESIGN DATA			
DESIGN ACC. TO	AD 2000 - Merkblatt / PED 97/23/EG		
MEDIUM	-		
CATEGORY	SEP		
OPERATING DATA		HOT SIDE	COLD SIDE
PRODUCT		-	-
TEST PRESSURE (AD 2000 / PED)		Barg	- / -
MIN. / MAX. ALL. PRESSURE (PS)		Barg	- / -
MIN. / MAX. ALL. TEMPERATURE (TS)		°C	- / -
CONTENT (V)		L	-
HE-SURFACE		m²	-
WEIGHT NETTO		kg	-
INLET TEMPERATURE		°C	-
OUTLET TEMPERATURE		°C	-

LENGTH OF PACK	$a_{max} = L1$
	$a_{min} = L1$
LENGTH OF CARRY BAR	$b = L$

NOZZLE CONNECTIONS				
POS	DIR	MEDIA	TYPE	DN
F1	IN	HOT SIDE	-	65
F2	OUT	COLD SIDE	-	65
F3	IN	COLD SIDE	-	65
F4	OUT	HOT SIDE	-	65

REFERENCE DRAWINGS & DOCUMENTS	
DESCRIPTION	ARES PHE DRAWING
DETAILS	A3M-10010-02
CALCULATION	A3M-10010-00-CAL

- GENERAL NOTES
- ALL DIMENSIONS ARE IN mm UNLESS OTHERWISE STATED
  - FLANGE BOLTHOLES STRADDLE CENTERLINES
  - NOZZLE FLANGE FACES SMOOTH FINISH 3.2-6.4 um Ra
  - ROUGHNESS OF GASKETS SURFACE SHALL BE Ra 3.2...6.3 um MAX, UNLESS NOTED OTHERWISE

NO.	QTY	DESCRIPTION	UNIT	REMARKS	CERT.
24	4	NOZZLE CONNECTION	-	-	3.1
23	2	PLATE	45x35x10	S235JR	-
22	2	PLATE	50x45x10	S235JR	-
21	1	BASE PLATE	70x50x10	S235JR	-
20	1	SUPPORT COLUMN	UPN50 L=914	S235JR	-
19	2	CARRY/GUIDE BAR	Ø30	S235JR	-
18	1	FOLLOWER ENDPLATE	928x395x20	S355J2G3	3.1
17	1	HEAD ENDPLATE	946x395x30	S355J2G3	3.1
16	3	FLAT WASHER	M10	CS	-
15	3	NUT	M10	.8	-
14	3	WEDGE ANCH. BOLT	M10 L=80	8.8	-
13	-	GASKET	-	-	-
12	-	HE PLATE	-	-	3.1
11	4	RIVET	Ø2.4 L=8	SS	-
10	1	NAMEPLATE ARES	140x100x3	SS	-
9	4	WASHER	M10	CS	-
8	2	HEX NUT	M10	.8	-
7	2	BOLT	M10x60	8.8	-
6	2	SOCKET HEAD BOLT	M16x45	8.8	-
5	2	WASHER	M16	CS	-
4	2	BOLT	M16x40	8.8	-
3	20	WASHER	M16	CS	-
2	20	HEX NUT	M16	.8	-
1	10	DOUBLE-END STUD	M16	8.8	3.1

PART LIST				
REV	DATE	HE	FOR APPROVAL	DESCRIPTION
0	13-06-12	HE <td>DESIGN</td> <td></td>	DESIGN	

Dimensions without tolerance:	Designed by	Approved by	Rev. no.	Revision Text	Format	Scale
	ARES	ARES	0	FOR APPROVAL	A1	1:5+VAR.

PHE MODEL: A3M PN10 L=100 ÷ 1000 MM GENERAL ARRANGEMENT			
Rev. date	Rev. by	Drawing no.	Sheet
13-06-12	HE	A3M-10010-01	1 OF 1