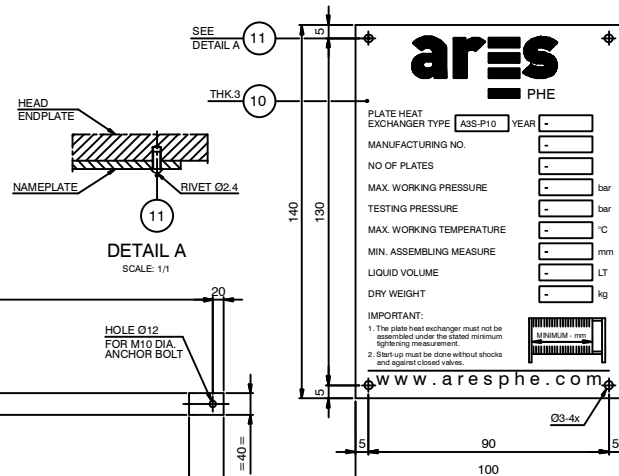
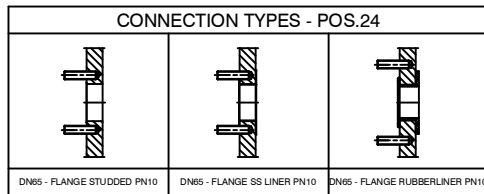
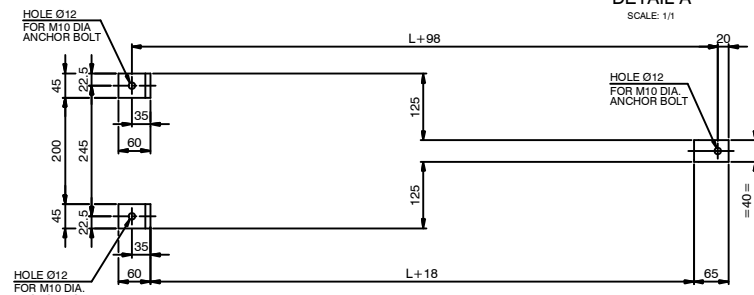


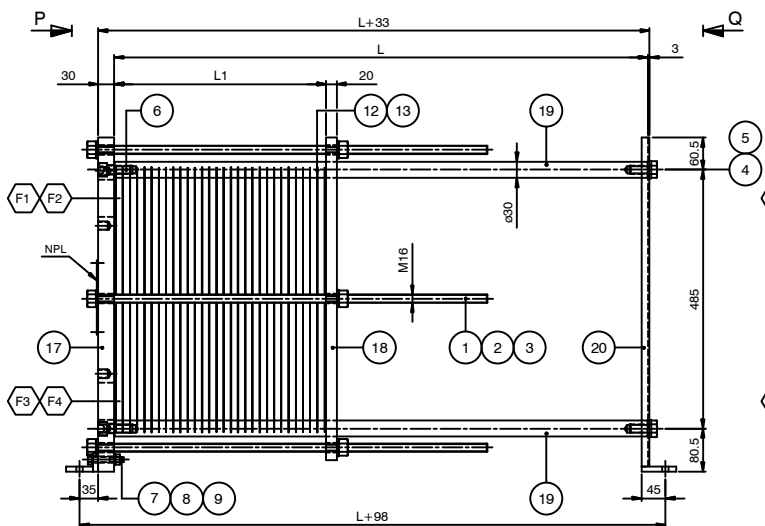
ISO VIEW



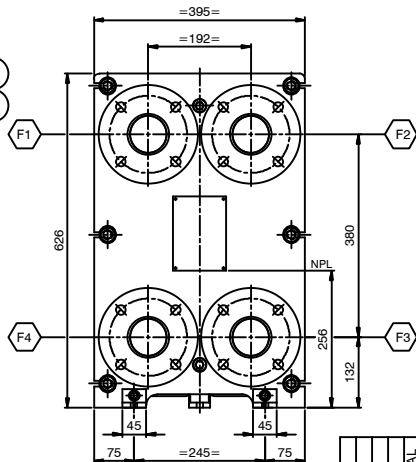
DETAIL A SCALE: 1/1



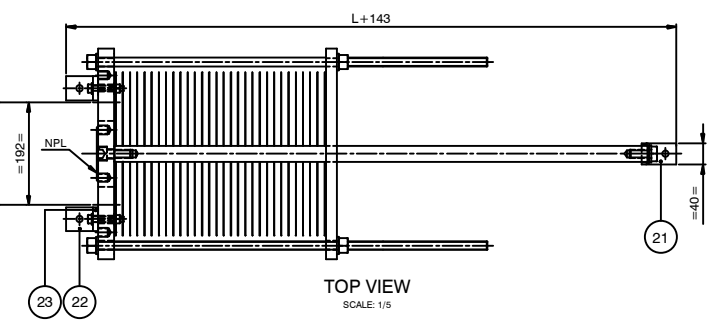
FOUNDATION PLAN



ELEVATION SCALE: 1/5



VIEW P FRONT SIDE SCALE: 1/5



TOP VIEW SCALE: 1/5

MAX. ALLOWABLE FORCES and MOMENTS ON NOZZLES						
NOZZLE	Forces (N)			Moments (Nm)		
	Longitud.	Circum.	Axial	Longitud.	Circum.	Torsional
F1,F2,F3,F4	255	255	255	143	143	143

NOZZLE LOADS ACCORDING TO API 662, TABLE 1

FOUNDATION LOADS		
	FRONT SIDE (N)	REAR SIDE (N)
DEAD LOAD (DL)	1875.6	905.5
OPERATING LOAD (DL+NOZZLE LOAD)	3714.2	1425.4

DESIGN DATA		
DESIGN ACC. TO	AD 2000 - Merkblatt / PED 97/23/EG	
MEDIUM	-	
CATEGORY	SEP	
OPERATING DATA		
	HOT SIDE	COLD SIDE
PRODUCT	-	-
TEST PRESSURE (AD2000 / PED)	Barg	- / -
MIN. / MAX. ALL. PRESSURE (PS)	Barg	- / -
MIN. / MAX. ALL. TEMPERATURE (TS)	°C	- / -
CONTENT (V)	L	-
HE-SURFACE	m²	-
WEIGHT NETTO	kg	-
INLET TEMPERATURE	°C	-
OUTLET TEMPERATURE	°C	-

LENGTH OF PACK	a <sub>max</sub> =L1
	a <sub>min</sub> =L1
LENGTH OF CARRY BAR	b=L

NOZZLE CONNECTIONS				
POS	DIR	MEDIA	TYPE	DN
F1	IN	HOT SIDE	-	65
F2	OUT	COLD SIDE	-	65
F3	IN	COLD SIDE	-	65
F4	OUT	HOT SIDE	-	65

REFERENCE DRAWINGS & DOCUMENTS	
DESCRIPTION	ARES PHE DRAWING
DETAILS	A3S-10010-02
CALCULATION	A3S-10010-00-CAL

- GENERAL NOTES
- ALL DIMENSIONS ARE IN mm UNLESS OTHERWISE STATED
  - FLANGE BOLTHOLES STRADDLE CENTERLINES
  - NOZZLE FLANGE FACES SMOOTH FINISH 3.2-6.4 um Ra
  - ROUGHNESS OF GASKETS SURFACE SHALL BE Ra 3.2...6.3 um MAX, UNLESS NOTED OTHERWISE

NO	QTY	DESCRIPTION	UNIT	REMARKS	CERT
24	4	NOZZLE CONNECTION	-		3.1
23	2	PLATE	45x35x10	S235JR	-
22	2	PLATE	50x45x10	S235JR	-
21	1	BASE PLATE	65x40x10	S235JR	-
20	1	SUPPORT COLUMN	616x80x3	S235JR	-
19	2	CARRY/GUIDE BAR	Ø30	S235JR	-
18	1	FOLLOWER ENDPLATE	604x395x20	S355 J2G3	-
17	1	HEAD ENDPLATE	626x395x30	S355 J2G3	-
16	3	FLAT WASHER	M10	CS	-
15	3	NUT	M10	.B	-
14	3	WEDGE ANCH. BOLT	M10 L=80	8.8	-
13	-	GASKET	-	-	-
12	-	HE PLATE	-	-	3.1
11	4	RIVET	Ø2.4 L=8	SS	-
10	1	NAMEPLATE ARES	140x100x3	SS	-
9	4	WASHER	M10	CS	-
8	2	HEX. NUT	M10	.B	-
7	2	BOLT	M10x60	8.8	-
6	2	SOCKET HEAD BOLT	M16x45	8.8	-
5	2	WASHER	M16	CS	-
4	2	BOLT	M16x40	8.8	-
3	12	WASHER	M16	CS	-
2	12	HEX. NUT	M16	.B	-
1	6	DOUBLE-END STUD	M16	8.8	3.1

PART LIST

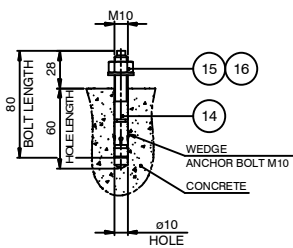
Designed by	Date	Approved by	Date	Rev. no.	Revision Text	Format	Scale
ARES		ARES		0	FOR APPROVAL	A1	1:5+VAR.

Dimensions without tolerance:

TOL ISO projection

Rev. date 25-06-12 Rev. by HE Drawing no. A3S-10010-01 Sheet 1 OF 1

Description: PHE MODEL: A3S PN10 L=100 ± 1000 MM GENERAL ARRANGEMENT



DETAIL ANCHOR BOLT SCALE: 1/2