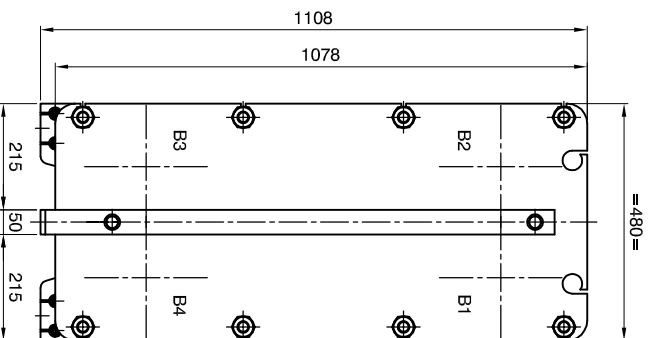


ISO VIEW

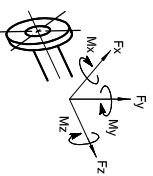


VIEW Q
REAR SIDE
SCALE: 1/7,5

MAX. ALLOWABLE FORCES and MOMENTS ON NOZZLES

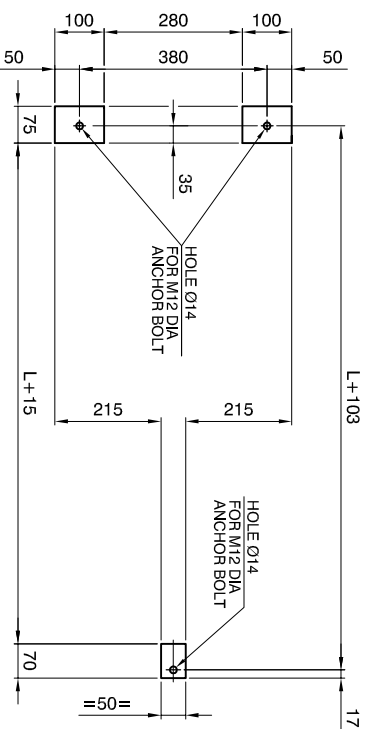
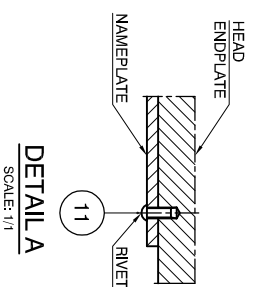
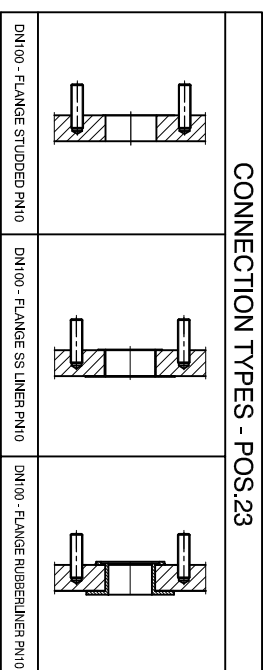
NOZZLE	Forces (N)		Moments (Nm)	
	Longitud. F _L	Circum. F _C	Longitud. M _L	Circum. M _C
F1, F2, F3, F4	427,0	427,0	347,5	347,5

NOZZLE LOADS ACCORDING TO API 662, TABLE 1

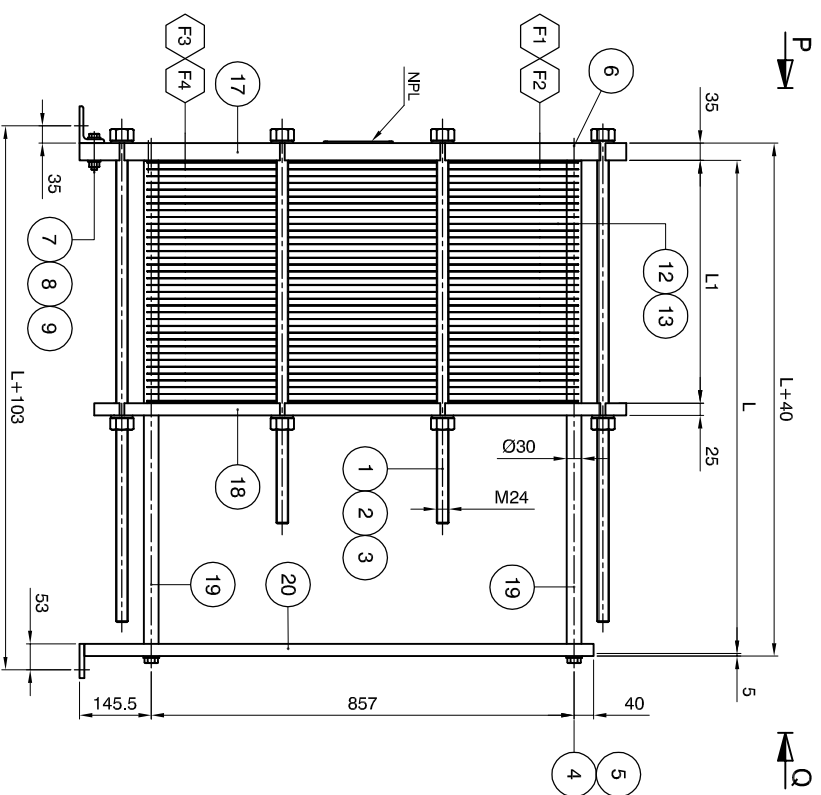


FOUNDATION LOADS

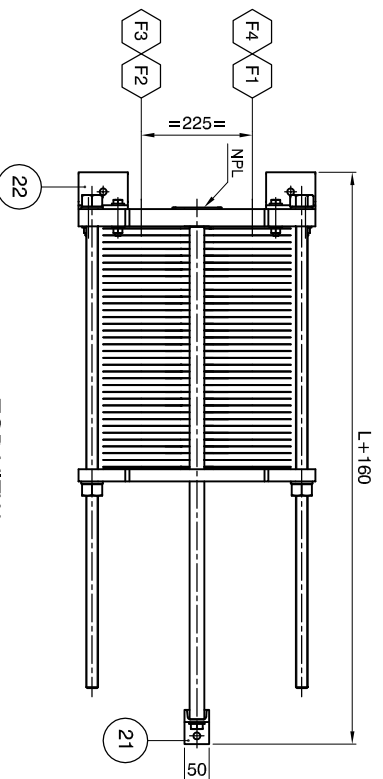
	FRONT SIDE (N)	REAR SIDE (N)
DEAD LOAD (DL)	3635,5	1464,0
OPERATING LOAD (OL) (= NOZZLE LOAD)	7491,8	3612,2



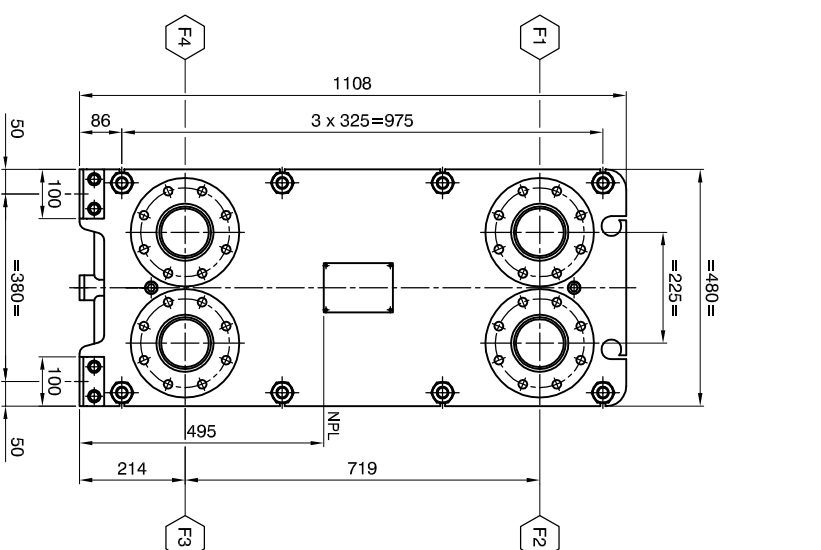
FOUNDATION PLAN



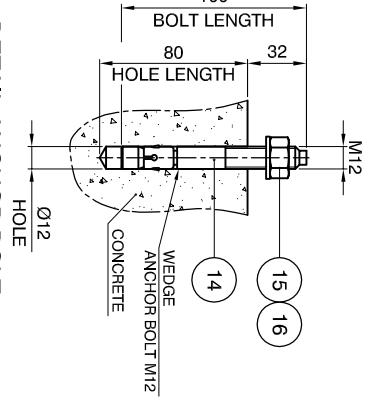
ELEVATION
SCALE: 1/7,5



TOP VIEW
SCALE: 1/7,5



VIEW P
FRONT SIDE
SCALE: 1/7,5



DETAIL ANCHOR BOLT
SCALE: 1/2

www.aresphe.com

ARES PHE

PLATE HEAT EXCHANGER TYPE AAA-PTO YEAR

MANUFACTURING NO.

NO OF PLATES

MAX. WORKING PRESSURE

TESTING PRESSURE

MAX. WORKING TEMPERATURE

MIN. ASSEMBLING MEASURE

LIQUID VOLUME

DRY WEIGHT

IMPORTANT:

1. The manufacturer must not be held responsible under the stated conditions for any damage or injury caused by the use of the product without proper installation and operation.

2. Start-up must be done without shocks.

3. The product is not to be used for any other purpose than intended.

4. The product is not to be used for any other purpose than intended.

5. The product is not to be used for any other purpose than intended.

6. The product is not to be used for any other purpose than intended.

7. The product is not to be used for any other purpose than intended.

8. The product is not to be used for any other purpose than intended.

9. The product is not to be used for any other purpose than intended.

10. The product is not to be used for any other purpose than intended.

11. The product is not to be used for any other purpose than intended.

DESIGN DATA

DESIGN ACC. TO	AD 2000 - Merkblatt / PED 97/23/EG
MEDIUM	-
CATEGORY	SEP
OPERATING DATA	HOT SIDE COLD SIDE
PRODUCT	-
TEST PRESSURE (AD2000 / PED)	Bar
MIN. / MAX. ALL. PRESSURE (PS)	Bar
MIN. / MAX. ALL. TEMPERATURE (TS)	°C
CONTENT (V)	L
HE-SURFACE	m ²
WEIGHT NETTO	kg
INLET TEMPERATURE	°C
OUTLET TEMPERATURE	°C
LENGTH OF PACK	l _{max} =L1 l _{min} =L1
LENGTH OF CARRY BAR	b=L

NOZZLE CONNECTIONS

POS	DIR	MEDIA	TYPE	DN
F1	IN	HOT SIDE	-	100
F2	OUT	COLD SIDE	-	100
F3	IN	COLD SIDE	-	100
F4	OUT	HOT SIDE	-	100

REFERENCE DRAWINGS & DOCUMENTS

DESCRIPTION	ARES PHE DRAWING
DETAILS	AAA-2001-0-02
CALCULATION	AAA-2001-0-00-CAL

GENERAL NOTES

- ALL DIMENSIONS ARE IN mm UNLESS OTHERWISE STATED
- FLANGE BOLTHOLES STRADDLE CENTERLINES
- NOZZLE FLANGE FACES SMOOTH FINISH 3,2-6,4 um Ra
- ROUGHNESS OF GASKETS SURFACE SHALL BE Ra 3,2...6,3 um MAX. UNLESS NOTED OTHERWISE

REV	DATE	NAME	DESCRIPTION
23	4	NOZZLE CONNECTION	-
22	2	ANGLE	L75x50x8 L=100 S235JR
21	1	BASE PLATE	70x50x10 S235JR
20	1	SUPPORT COLUMN	UPN50x25 L=1032 S235JR
19	2	CARRY/GUIDE BAR	Ø30 S235JR
18	1	FOLLOWER ENDPLATE	1078x480x25 S355 J2G3
17	1	HEAD ENDPLATE	1108x480x35 S355 J2G3
16	3	FLAT WASHER	M12 CS
15	3	NUT	M12 .8
14	3	WEDGE ANCH. BOLT	M12 L=100 8.8
13	-	GASKET	-
12	-	HE PLATE	-
11	4	RIVET	Ø2.4 L=8 SS
10	1	NAMEPLATE ARES	140x100x3 SS
9	4	HEX NUT	M12 8
8	4	WASHER	M12 CS
7	4	BOLT	M12x65 8.8
6	2	SOCKET HEAD BOLT	M16x50 8.8
5	2	WASHER	M16 CS
4	2	BOLT	M16x45 8.8
3	16	WASHER	M24 CS
2	16	HEX NUT	M24 .8
1	8	DOUBLE-END STUD	M24 8.8

PART LIST

Item	qty	description	dimensions	material	remarks
1	8	DOUBLE-END STUD	M24	8.8	3.1

Designed by: A. YABAU

Date Approved by: A1

Revision Text: FOR APPROVAL

Format: A1

Scale: 1:7,5-VAR.

ISO projection

ARES PHE

GENERAL ARRANGEMENT

Rev. date: 19-12-14

Rev. by: HE

Drawing no.: AAA-2001-0-01

Sheet: 1 OF 1