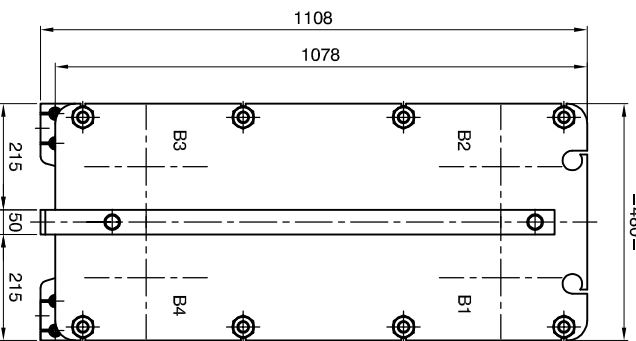


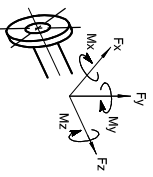
ISO VIEW



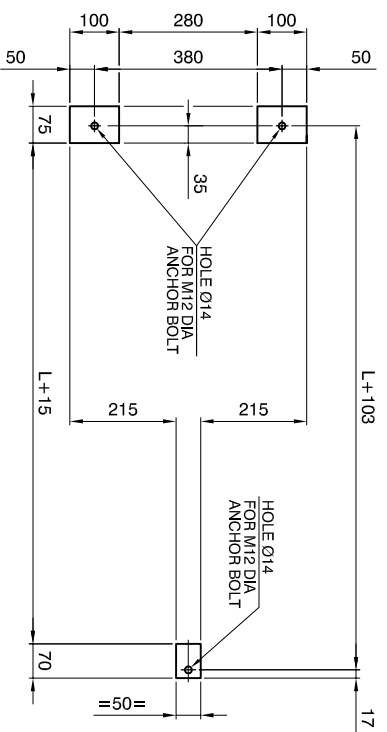
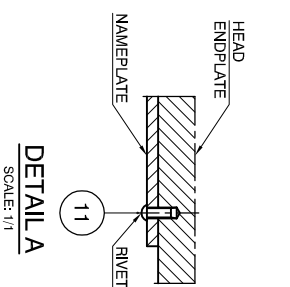
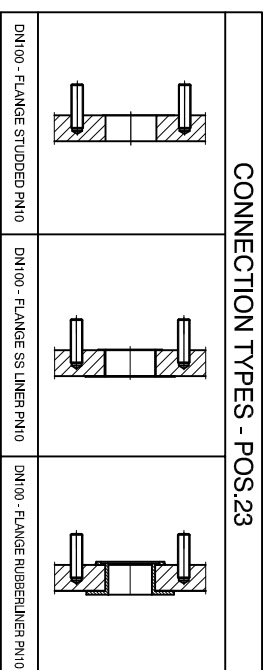
VIEW Q  
REAR SIDE  
SCALE: 1/7,5

MAX. ALLOWABLE FORCES and MOMENTS ON NOZZLES						
NOZZLE	Forces (N)			Moments (Nm)		
	Longitud. F <sub>l</sub>	Transv. F <sub>t</sub>	Dist. F <sub>d</sub>	Longitud. M <sub>l</sub>	Transv. M <sub>t</sub>	Dist. M <sub>d</sub>
F1, F2, F3, F4	427,0	427,0	427,0	347,5	347,5	347,5

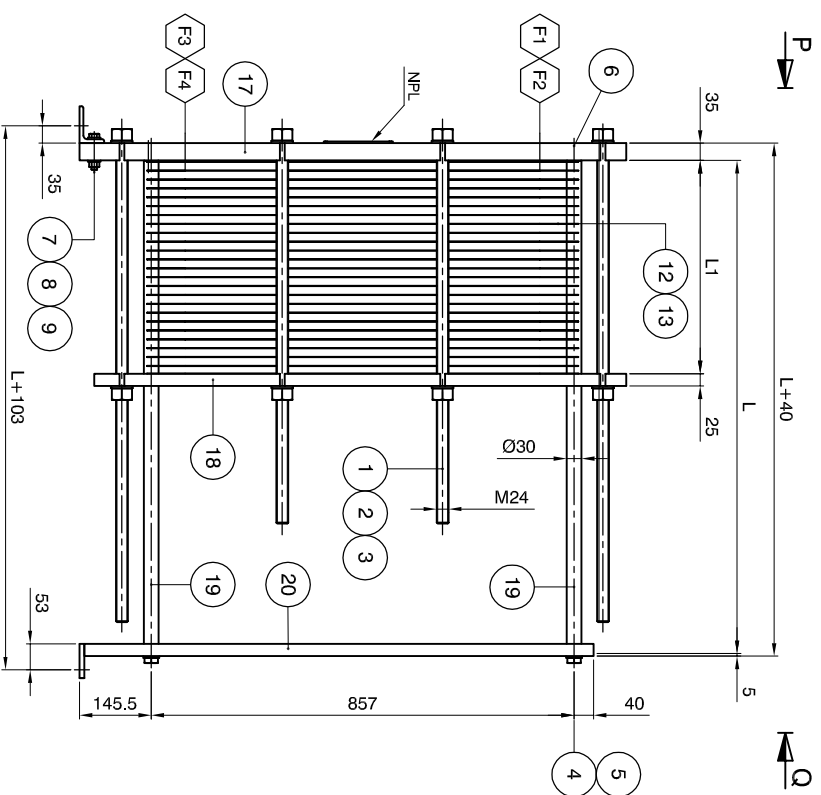
NOZZLE LOADS ACCORDING TO API 662, TABLE 1



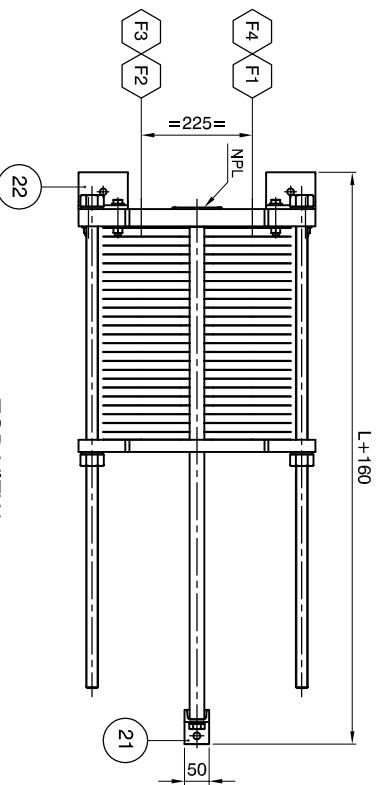
FOUNDATION LOADS	
FRONT SIDE (N)	REAR SIDE (N)
4153,5	1485,3
OPERATING LOAD (DL+NOZZLE LOAD)	8009,8
	3833,5



FOUNDATION PLAN



ELEVATION  
SCALE: 1/7,5



TOP VIEW  
SCALE: 1/7,5

SEE DETAIL A 11

THK.3 10

11

SCALE: 1/1

PLATE HEAT EXCHANGER TYPE A4S-P10 YEAR

MANUFACTURING NO.

NO OF PLATES

MAX. WORKING PRESSURE

TESTING PRESSURE

MAX. WORKING TEMPERATURE

MIN. ASSEMBLING MEASURE

LIQUID VOLUME

DRY WEIGHT

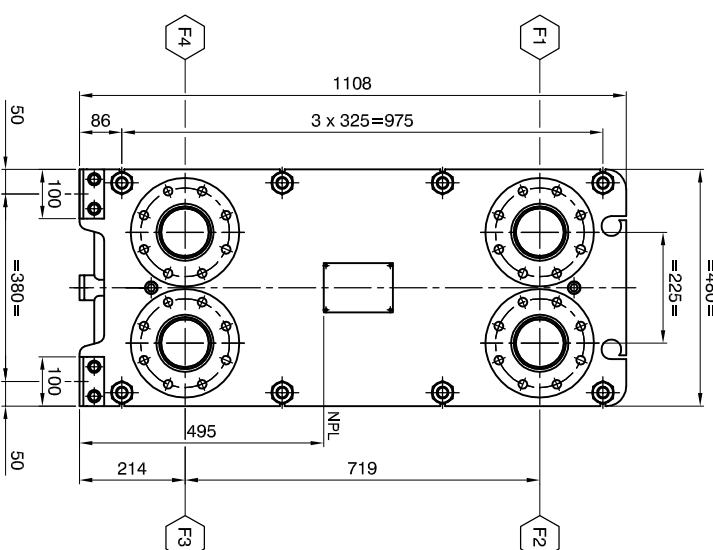
IMPORTANT:

1. The weight per meter and the number of plates must be measured under the actual medium (ignoring measurement).

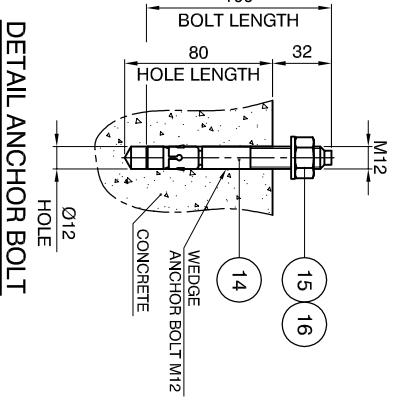
2. Start-ups must be done without shocks and after the start-up.

www.aresphe.com

DETAIL NAMEPLATE  
SCALE: 1/1



VIEW P  
FRONT SIDE  
SCALE: 1/7,5



DETAIL ANCHOR BOLT  
SCALE: 1/2

DESIGN DATA

DESIGN ACC. TO	AD 2000 - Merkblatt / PED 97/23/EG
MEDIUM	-
CATEGORY	SEP
OPERATING DATA	HOT SIDE COLD SIDE
PRODUCT	-
TEST PRESSURE (AD2000 / PED)	- / -
MIN. / MAX. ALL. PRESSURE (PS)	- / -
MIN. / MAX. ALL. TEMPERATURE (TS)	- / -
CONTENT (V)	-
HE-SURFACE	-
WEIGHT NETTO	-
INLET TEMPERATURE	-
OUTLET TEMPERATURE	-

LENGTH OF PACK	a <sub>max</sub> =L1	b <sub>min</sub> =L1
LENGTH OF CARRY BAR	b=L	

POS	DIR	MEDIA	TYPE	DN
F1	IN	HOT SIDE	-	100
F2	OUT	COLD SIDE	-	100
F3	IN	COLD SIDE	-	100
F4	OUT	HOT SIDE	-	100

REFERENCE DRAWINGS & DOCUMENTS

DESCRIPTION	ARES PHE DRAWING
DETAILS	A4S-2001-0-02
CALCULATION	A4S-2001-0-00-CAL

GENERAL NOTES

- ALL DIMENSIONS ARE IN mm UNLESS OTHERWISE STATED
- FLANGE BOLT HOLES STRADDLE CENTERLINES
- NOZZLE FLANGE FACES SMOOTH FINISH 3.2-6.4 μm Ra
- ROUGHNESS OF GASKETS SURFACE SHALL BE Ra 3.2...6.3 μm MAX. UNLESS NOTED OTHERWISE

REV	DATE	NAME	DESCRIPTION
0	19-12-14	HE	FOR APPROVAL

Item	qty	description	dimensions	material	remarks
23	4	NOZZLE CONNECTION	-	-	3.1
22	2	ANGLE	L75x50x8 L=100	S235JR	-
21	1	BASE PLATE	70x50x10	S235JR	-
20	1	SUPPORT COLUMN	UPN50x25 L=1032	S235JR	-
19	2	CARRY/GUIDE BAR	Ø30	S235JR	-
18	1	FOLLOWER ENDPLATE	1078x480x25	S355 J2G3	3.1
17	1	HEAD ENDPLATE	1108x480x35	S355 J2G3	3.1
16	3	FLAT WASHER	M12	CS	-
15	3	NUT	M12	.8	-
14	3	WEDGE ANCH. BOLT	M12 L=100	.8	-
13	-	GASKET	-	-	-
12	-	HE PLATE	-	-	3.1
11	4	RIVET	Ø2.4 L=8	SS	-
10	1	NAMEPLATE ARES	140x100x3	SS	-
9	4	HEX NUT	M12	.8	-
8	4	WASHER	M12	CS	-
7	4	BOLT	M12x65	.8	-
6	2	SOCKET HEAD BOLT	M16x50	.8	-
5	2	WASHER	M16	CS	-
4	2	BOLT	M16x45	.8	-
3	16	WASHER	M24	CS	-
2	16	HEX NUT	M24	.8	-
1	8	DOUBLE-END STUD	M24	.8	3.1

PART LIST

Design by	Date	Approved by	Date	Rev. no.	Revision Text	Format	Scale
HITARD		A. YABAU		0	FOR APPROVAL	A1	1:7,5+VAR

Description:	Rev. date	Rev. by	Drawing no.	Sheet
PHE MODEL: A4S PN10 L=400 ÷ 1000 MM GENERAL ARRANGEMENT	19-12-14	HE	A4S-2001-0-01	1 OF 1

