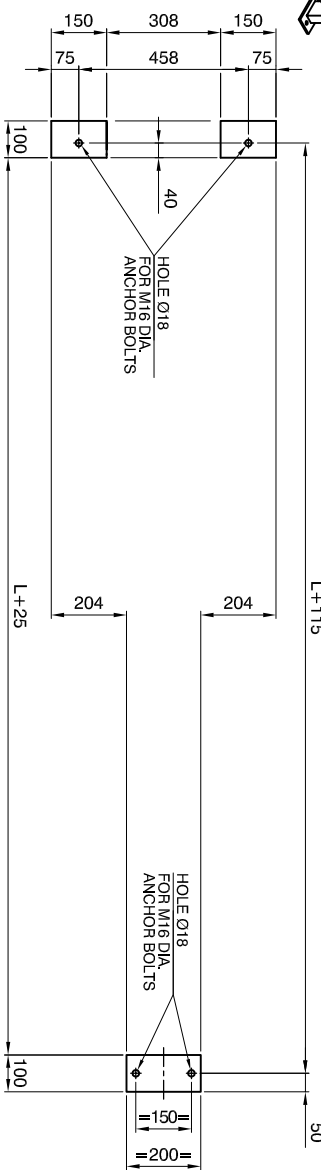
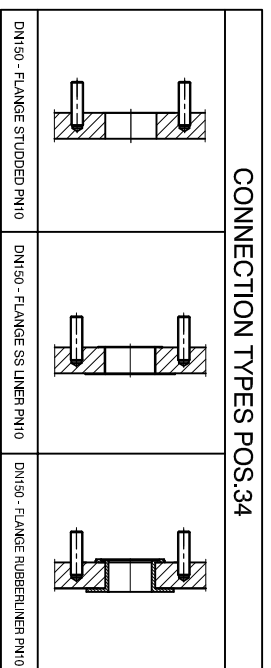


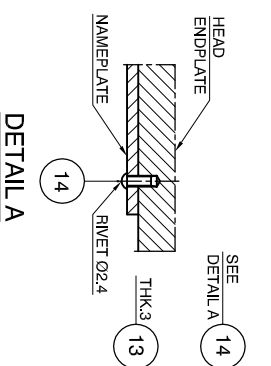
ISO VIEW ▲



FOUNDATION PLAN



CONNECTION TYPES POS.34



DETAIL A

PLATE HEAT EXCHANGER TYPE ASS-P10 YEAR -

MANUFACTURING NO. -

NO OF PLATES -

MAX. WORKING PRESSURE - bar

TESTING PRESSURE - bar

MAX. WORKING TEMPERATURE - °C

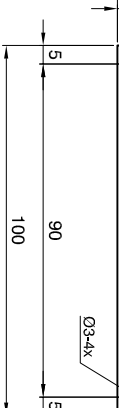
MIN. ASSEMBLING MEASURE - mm

LIQUID VOLUME - LT

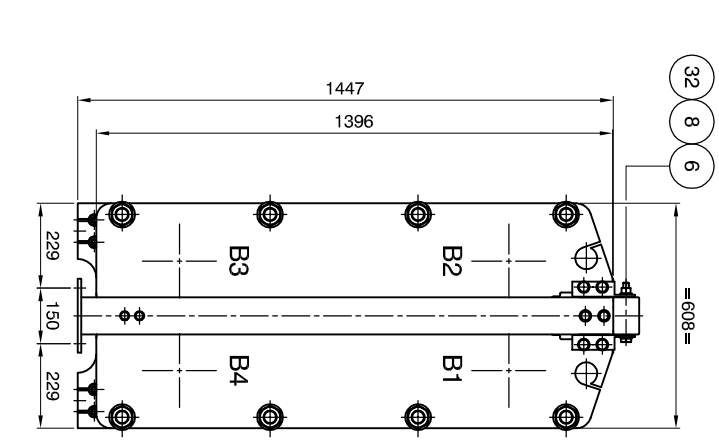
DRY WEIGHT - kg

IMPORTANT:
1. The plate heat exchanger must not be assembled under the stated minimum temperature.
2. Surfaces must be dried without shock and degreased valves.

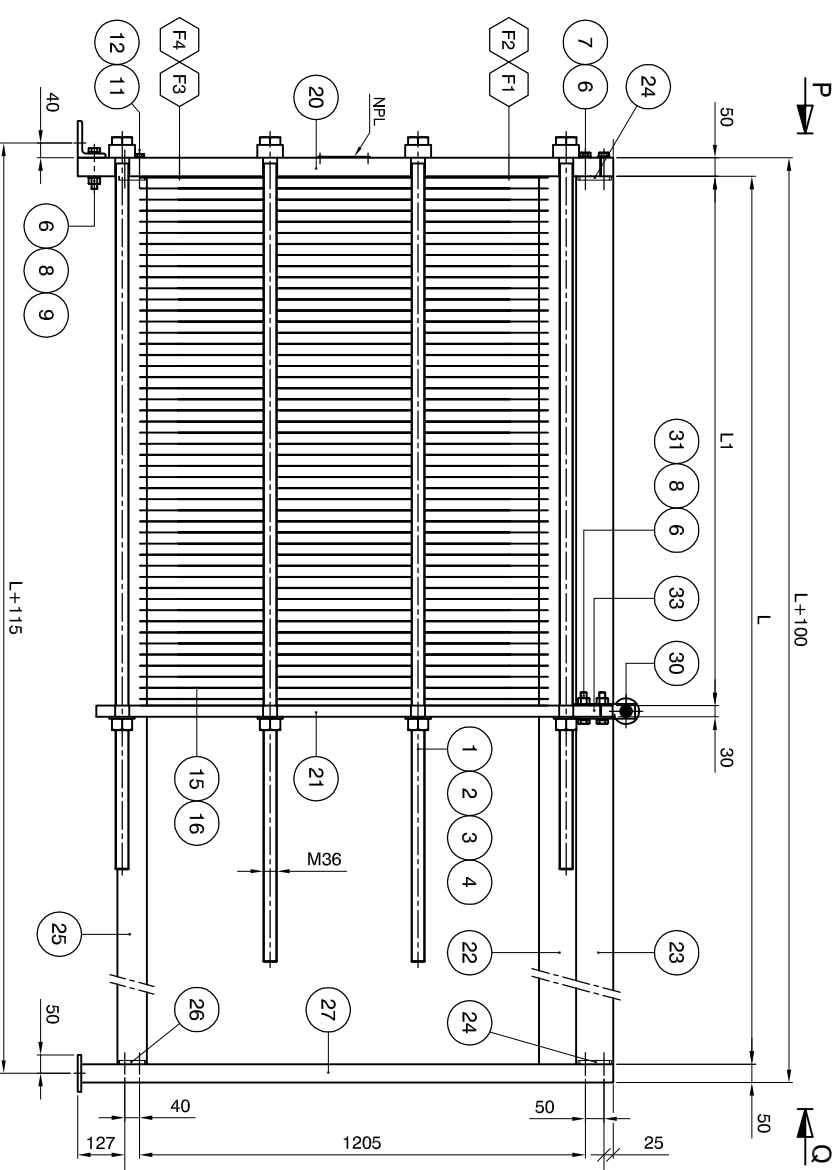
www.aresphe.com



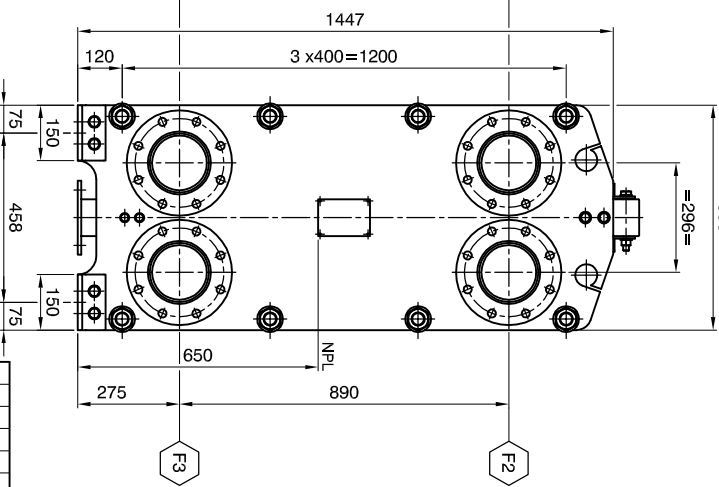
DETAIL NAMEPLATE



VIEW Q ▲



ELEVATION ▲

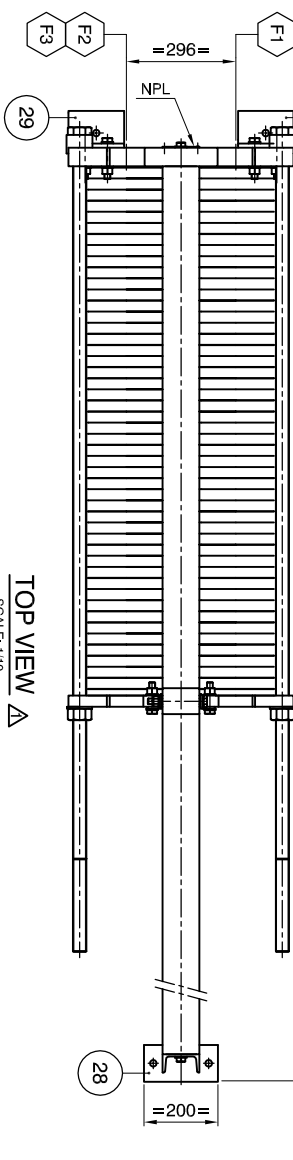


VIEW P ▲

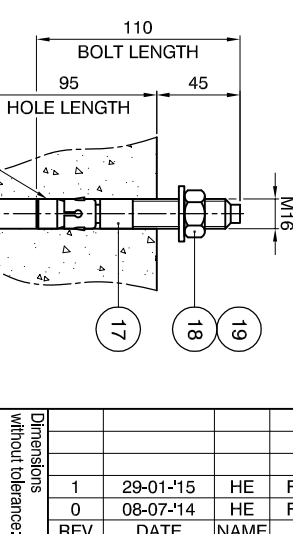
MAX. ALLOWABLE FORCES AND MOMENTS ON NOZZLES

NOZZLE	Forces (N)		Moments (Nm)	
	Longitud. Fx	Circum. Fy	Longitud. Mx	Torsional Mz
F1, F2, F3, F4	694.6	694.6	719.9	719.9

NOZZLE LOADS ACCORDING TO API 662 TABLE 1



TOP VIEW ▲



DETAIL ANCHOR BOLT

FOUNDATION LOADS

	FRONT SIDE (N)	REAR SIDE (N)
DEAD LOAD (DL)	17044.9	6295.0
OPERATING LOAD (OL - NOZZLE LOAD)	21990.1	7861.6

- GENERAL NOTES**
- ALL DIMENSIONS ARE IN mm UNLESS OTHERWISE STATED
 - FLANGE BOLT HOLES STRADDLE CENTERLINES
 - NOZZLE FLANGE FACES SMOOTH FINISH 3.2-6.4 um Ra
 - ROUGHNESS OF GASKETS SURFACE SHALL BE Ra 3.2...6.3 um MAX UNLESS NOTED OTHERWISE

REV	DATE	NAME	DESCRIPTION
HE	29-01-15	HE	FOR APPROVAL
HE	08-07-14	HE	FOR APPROVAL

DESIGN DATA

DESIGN ACC. TO	AD 2000 - Merkblatt / PED 97/23/EG
MEDIUM	-
CATEGORY	SEP
OPERATING DATA	HOT SIDE COLD SIDE
PRODUCT	-
TEST PRESSURE (AD2000 / PED)	Bar
MIN. / MAX. ALL. PRESSURE (PS)	Bar
MIN. / MAX. ALL. TEMPERATURE (TS)	°C
CONTENT (V)	L
HE-SURFACE	m ²
WEIGHT NETTO	kg
INLET TEMPERATURE	°C
OUTLET TEMPERATURE	°C
LENGTH OF PACK	a _{max} =L1 a _{min} =L1
LENGTH OF CARRY BAR	b=L

NOZZLE CONNECTIONS

POS	DIR	MEDIA	TYPE	DN
F1	IN	HOT SIDE	-	150
F2	OUT	COLD SIDE	-	150
F3	IN	COLD SIDE	-	150
F4	OUT	HOT SIDE	-	150

REFERENCE DRAWINGS & DOCUMENTS

DESCRIPTION	ARES PHE DRAWING
DETAILS	AGS-20010-02
CALCULATION	AGS-20010-00-CAL

34	4	NOZZLE CONNECTION	-	-	3.1
33	2	ANGLE	L40x40x5 L=169	S235JR	-
32	1	BOLT	M16x150	8.8	-
31	4	BOLT	M16x75	8.8	-
30	1	ROLLER	Ø70 L=100	HARD BLACK PLASTIC	-
29	2	ANGLE	L100x75x12 L=150	S235JR	-
28	1	BASE PLATE	200x100x10	S235JR	-
27	1	SUPPORT COLUMN	UPN100 L=1437	S235JR	-
26	2	PLATE	72x22x10	S235JR	-
25	1	GUIDE BAR (SQUARE TUBE)	80x30x3	S235JR	-
24	2	PLATE	90x90x10	S235JR	-
23	1	CARRY BAR SUPPORT	100x100x4	S235JR	-
22	1	CARRY BAR	IPN 100	S235JR	-
21	1	FOLLOWER ENDPLATE	1396x608x30	S355J2G3	3.1
20	1	HEAD ENDPLATE	1447x608x50	S355J2G3	3.1
19	4	FLAT WASHER	M16	CS	-
18	4	NUT	M16	8.8	-
17	4	WEDGE ANCH. BOLT	M16 L=110	8.8	-
16	-	GASKET	-	-	-
15	-	HE PLATE	-	-	3.1
14	4	RIVET	Ø2.4 L=8	SS	-
13	1	NAMEPLATE ARES	140x100x3	SS	-
12	2	BOLT	M12x75	8.8	-
11	4	WASHER	M12	CS	-
10	2	BOLT	M12x30	8.8	-
9	4	BOLT	M16x100	8.8	-
8	9	HEX NUT	M16	8.8	-
7	2	BOLT	M16x80	8.8	-
6	22	WASHER	M16	CS	-
5	2	BOLT	M16x30	8.8	-
4	8	BUSHING	Ø68x35	S235JR	-
3	8	LOCK WASHER	Ø70x50	S235JR	-
2	16	HEX NUT	M36	8.8	-
1	8	DOUBLE-END STUD	M36	8.8	3.1

PART LIST

Item	qty	description	dimensions	material	remarks
1	1	DOUBLE-END STUD	M36	8.8	3.1

Designed by: **A. YABAU** / Date: **29-01-15** / Approved by: **HE** / Revision no.: **1** / FOR APPROVAL

Scale: **1:10+VAR**

Format: **A1**

Description: **PHE MODEL: AGS PN10 L=600 ÷ 3000 MM GENERAL ARRANGEMENT**

Rev. date: **29-01-15** / Rev. by: **HE** / Drawing no.: **AGS-20010-01** / Sheet: **1 OF 1**