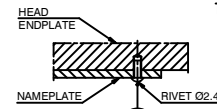
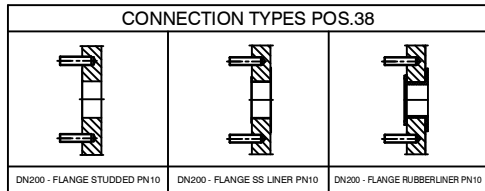
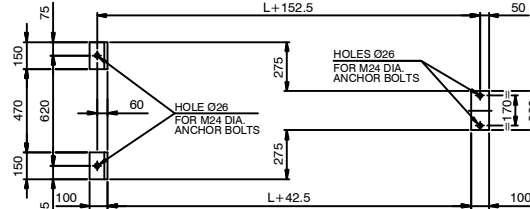


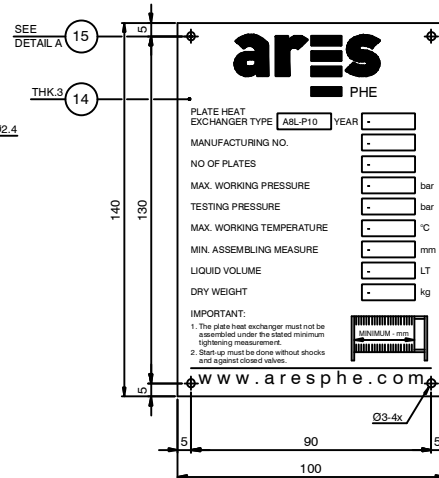
ISO VIEW



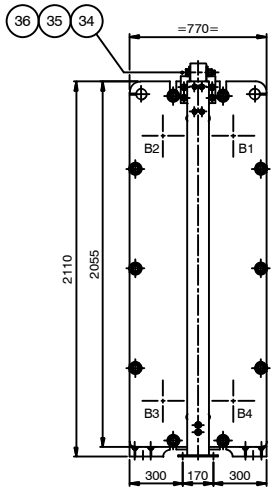
DETAIL A
SCALE: 1/1



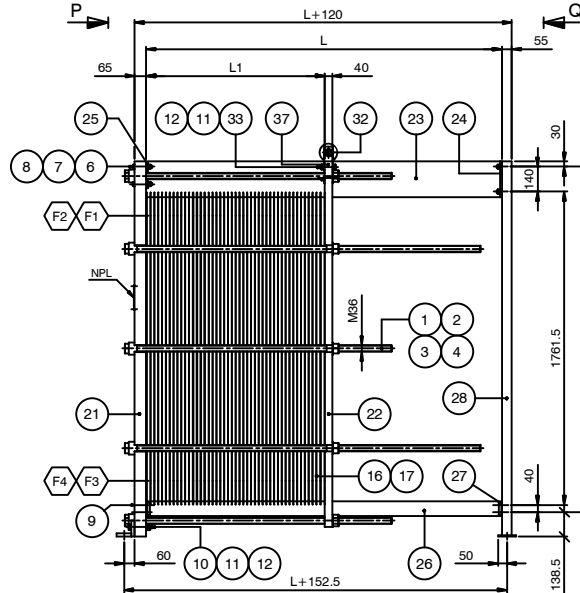
FOUNDATION PLAN



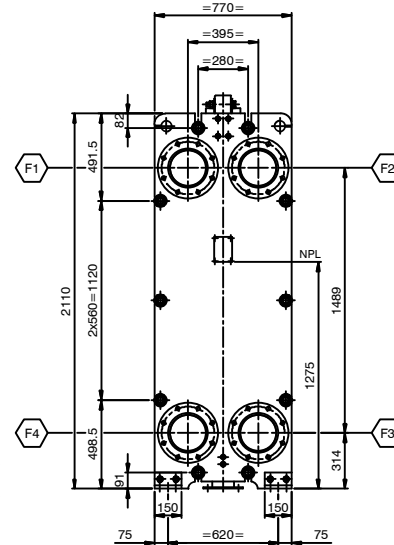
DETAIL NAMEPLATE
SCALE: 1/1



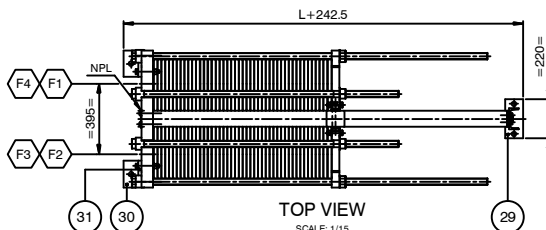
VIEW Q
REAR SIDE
SCALE: 1/1.5



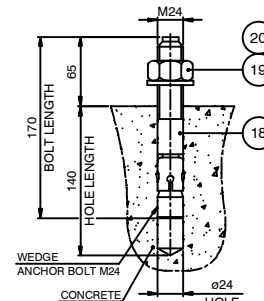
ELEVATION
SCALE: 1/1.5



VIEW P
FRONT SIDE
SCALE: 1/1.5



TOP VIEW
SCALE: 1/1.5



DETAIL ANCHOR BOLT
SCALE: 1/2.5

- GENERAL NOTES**
- ALL DIMENSIONS ARE IN mm UNLESS OTHERWISE STATED
 - FLANGE BOLTHOLES STRADDLE CENTERLINES
 - NOZZLE FLANGE FACES SMOOTH FINISH 3.2-6.4 um Ra
 - ROUGHNESS OF GASKETS SURFACE SHALL BE Ra 3.2...6.3 um MAX, UNLESS NOTED OTHERWISE

MAX ALLOWABLE FORCES AND MOMENTS ON NOZZLES

NOZZLE	Forces (N)			Moments (Nm)		
	Longitud Fy	Circum Fx	Axial Fz	Longitud Mx	Circum My	Torsional Mz
F1,F2,F3,F4	981.0	981.0	981.0	1170.2	1170.2	1170.2

FOUNDATION LOADS

	FRONT SIDE (N)	REAR SIDE (N)
DEAD LOAD (DL)	23801.1	9690.5
OPERATING LOAD (DL+NOZZLE LOAD)	31829.6	13694.9

DESIGN DATA

DESIGN ACC. TO	AD 2000 - Merkblatt / PED 97/23/EG	
MEDIUM	-	
CATEGORY	SEP	
OPERATING DATA	HOT SIDE	COLD SIDE
PRODUCT	-	-
TEST PRESSURE (AD2000 / PED)	Barg	- / -
MIN. / MAX. ALL. PRESSURE (PS)	Barg	- / -
MIN. / MAX. ALL. TEMPERATURE (TS)	°C	- / -
CONTENT (V)	L	-
HE-SURFACE	m²	-
WEIGHT NETTO	kg	-
INLET TEMPERATURE	°C	-
OUTLET TEMPERATURE	°C	-

LENGTH OF PACK	a _{max} =L1
	a _{min} =L1
LENGTH OF CARRY BAR	b=L

NOZZLE CONNECTIONS

POS	DIR	MEDIA	TYPE	DN
F1	IN	HOT SIDE	-	200
F2	OUT	COLD SIDE	-	200
F3	IN	COLD SIDE	-	200
F4	OUT	HOT SIDE	-	200

REFERENCE DRAWINGS & DOCUMENTS

DESCRIPTION	ARES PHE DRAWING
DETAILS	A8L-10010-02
CALCULATION	A8L-10010-00-CAL

NO.	QTY	DESCRIPTION	UNIT	REMARKS	CERT.
38	4	NOZZLE CONNECTION	-	-	3.1
37	2	ANGLE L50x50x5 L=205	S235JR	-	-
36	1	WASHER M20	CS	-	-
35	1	HEX. NUT M20	.8	-	-
34	1	BOLT M20x150	8.8	-	-
33	4	BOLT M16x75	8.8	-	-
32	1	ROLLER Ø100 L=90	HARD BLACK PLASTIC	-	-
31	2	PLATE 150x90x20	S235JR	-	-
30	2	PLATE 150x80x20	S235JR	-	-
29	1	BASE PLATE 220x100x10	S235JR	-	-
28	1	SUPPORT COLUMN UPN120 L=2100	S235JR	-	-
27	2	PLATE 70x70x15	S235JR	-	-
26	1	GUIDE BAR (SQUARE TUBE) 80x80x4	S235JR	-	-
25	2	PLATE 143x40x10	S235JR	-	-
24	1	PLATE 200x90x10	S235JR	-	-
23	1	CARRY BAR IPN 200	S235JR	-	-
22	1	FOLLOWER ENDPLATE 2055x770x40	S355 J2G3	-	3.1
21	1	HEAD ENDPLATE 2110x770x65	S355 J2G3	-	3.1
20	4	FLAT WASHER M24	CS	-	-
19	4	NUT M24	.8	-	-
18	4	WEDGE ANCH. BOLT M24 L=170	8.8	-	-
17	-	GASKET	-	-	-
16	-	HE PLATE	-	-	3.1
15	4	RIVET Ø2.4 L=8	SS	-	-
14	1	NAMEPLATE ARES 140x100x3	SS	-	-
13	2	BOLT M16x45	8.8	-	-
12	18	WASHER M16	CS	-	-
11	8	HEX. NUT M16	.8	-	-
10	4	BOLT M16x120	8.8	-	-
9	2	SOCKET HEAD BOLT M16x80	8.8	-	-
8	4	BOLT M12x100	8.8	-	-
7	18	WASHER M12	CS	-	-
6	8	HEX. NUT M12	.8	-	-
5	4	BOLT M12x40	8.8	-	-
4	10	BUSHING Ø88x35	S235JR	-	-
3	10	LOCK WASHER Ø70x50	S235JR	-	-
2	20	HEX. NUT M36	.8	-	-
1	10	DOUBLE-END STUD M36	8.8	-	3.1

PART LIST

Designed by	Date	Approved by	Date	Rev. no.	Revision Text	Format	Scale
ARES		ARES		0	FOR APPROVAL	A1	1:15+VAR
Description:				PHE MODEL: A8L PN10 L=600 ± 2000 MM			
GENERAL ARRANGEMENT				Rev. date			
				Rev. by			
				Drawing no.			
				Sheet			
				1 OF 1			

