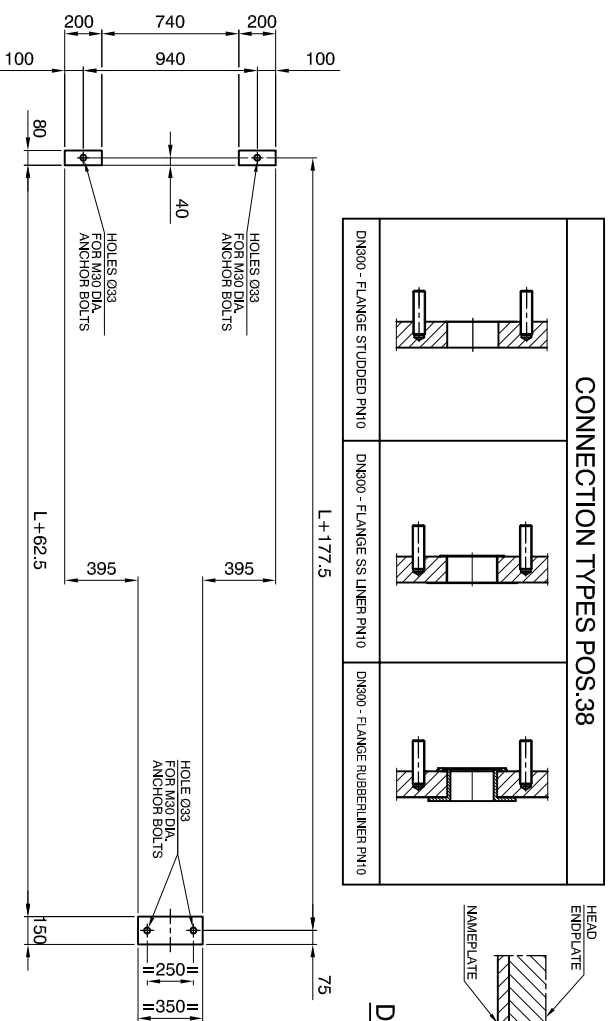
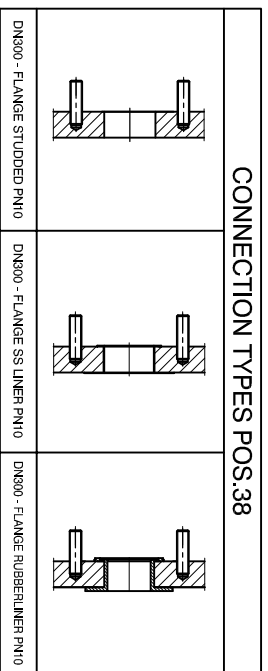


ISO VIEW



FOUNDATION PLAN



DETAIL A

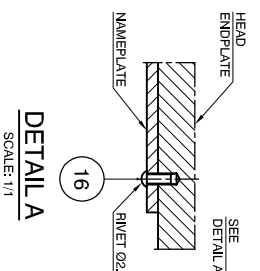


PLATE HEAT EXCHANGER TYPE AWG12-P10/ YEAR -
MANUFACTURING NO. -
NO OF PLATES -
MAX. WORKING PRESSURE bar -
TESTING PRESSURE bar -
MAX. WORKING TEMPERATURE °C -
MIN. ASSEMBLING MEASURE mm -
LIQUID VOLUME LT -
DRY WEIGHT kg

IMPORTANT:
1. The plate heat exchanger must not be subjected to any pressure or temperature testing requirements.
2. Start-up must be done without shocks and against closed valves.

www.aresphe.com

DETAIL NAMEPLATE

SCALE: 1/1

DESIGN DATA

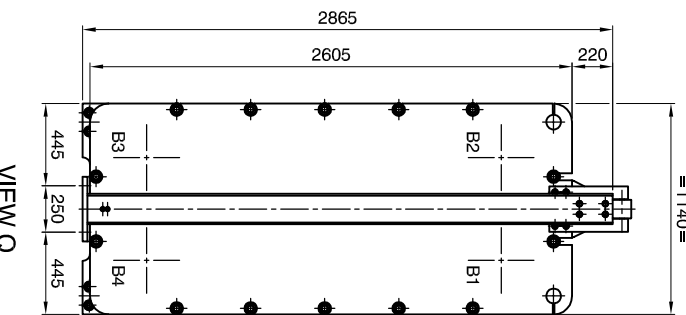
DESIGN ACC. TO	AD 2000 - Merkblatt / PED 97/23/EG
MEDIUM	-
CATEGORY	SEP
OPERATING DATA	HOT SIDE COLD SIDE
PRODUCT	-
TEST PRESSURE (AD2000 / PED)	Bar/g - / -
MIN. / MAX. ALL. PRESSURE (PS)	Bar/g - / -
MIN. / MAX. ALL. TEMPERATURE (TS)	°C - / -
CONTENT (V)	L -
HE-SURFACE	m ² -
WEIGHT NETTO	kg -
INLET TEMPERATURE	°C -
OUTLET TEMPERATURE	°C -
LENGTH OF PACK	a _{max} =L1 a _{min} =L1
LENGTH OF CARRY BAR	b=L

NOZZLE CONNECTIONS

POS	DIR	MEDIA	TYPE	DN
F1	IN	HOT SIDE	-	300
F2	OUT	COLD SIDE	-	300
F3	IN	COLD SIDE	-	300
F4	OUT	HOT SIDE	-	300

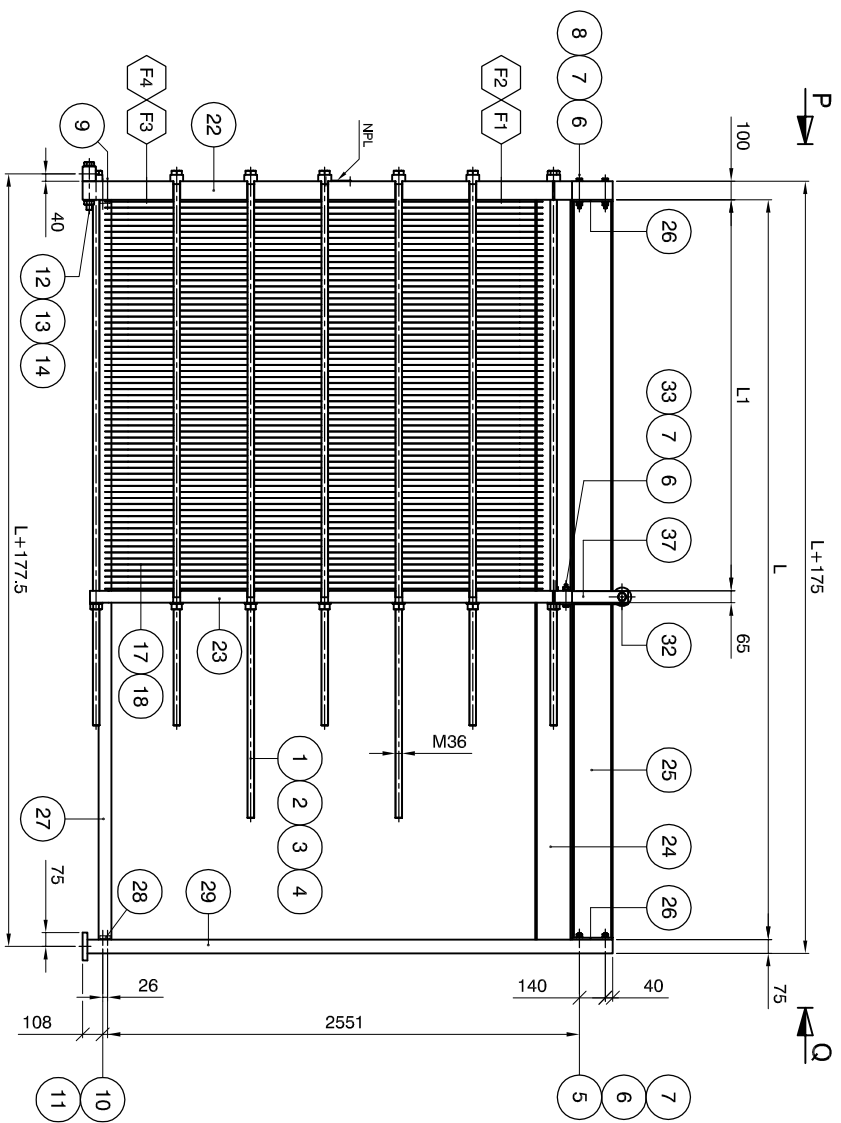
REFERENCE DRAWINGS & DOCUMENTS

DESCRIPTION	ARES PHE DRAWING
DETAILS	AWG12-20010-02
CALCULATION	AWG12-20010-00-CAL



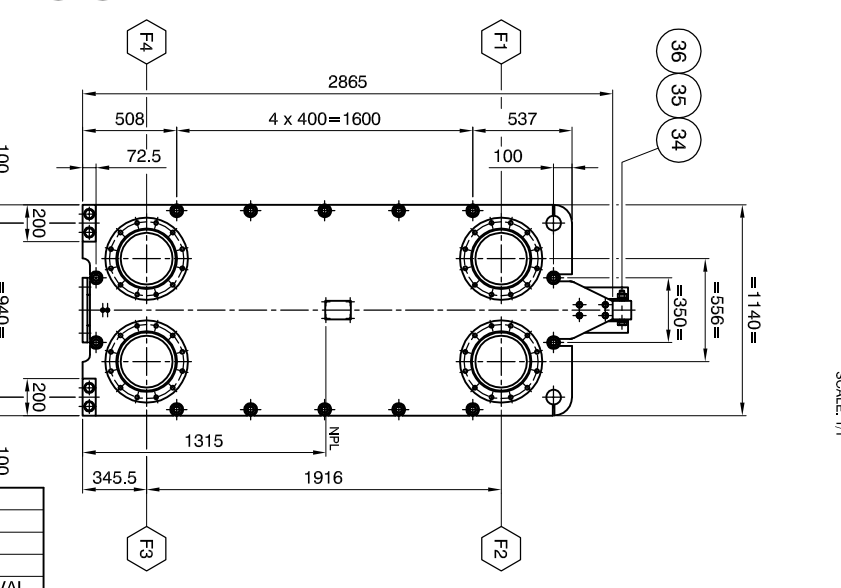
VIEW Q

REAR SIDE
SCALE: 1/20



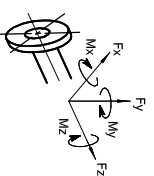
ELEVATION

SCALE: 1/20



VIEW P

FRONT SIDE
SCALE: 1/20

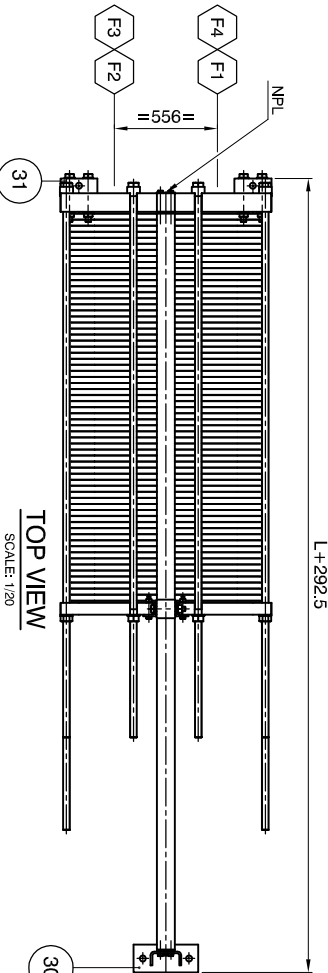


MAX. ALLOWABLE FORCES and MOMENTS ON NOZZLES

NOZZLE	Forces (N)			Moments (Nm)		
	Longitud. Fx	Chocum. Fy	Radial Fz	Longitud. Mx	Torsional My	Flexional Mz
F1, F2, F3, F4	1595,9	1595,9	1595,9	2275,6	2275,6	2275,6

NOZZLE LOADS ACCORDING TO API 662, TABLE 1

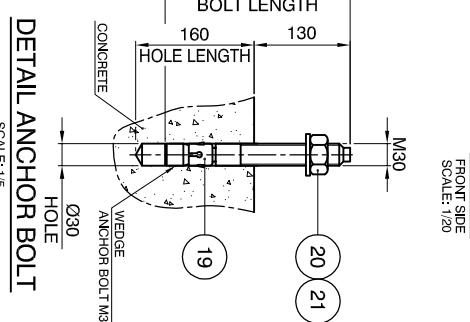
FOUNDATION LOADS	
FRONT SIDE (N)	REAR SIDE (N)
90224,0	35898,6
100778,1	40060,2



TOP VIEW

SCALE: 1/20

- GENERAL NOTES**
- ALL DIMENSIONS ARE IN mm UNLESS OTHERWISE STATED
 - FLANGE BOLTHOLES STRADDLE CENTRLINES
 - NOZZLE FLANGE FACES SMOOTH FINISH 3.2-6.4 um Ra
 - ROUGHNESS OF GASKETS SURFACE SHALL BE Ra 3.2...6.3 um MAX. UNLESS NOTED OTHERWISE



DETAIL ANCHOR BOLT

SCALE: 1/5

REV	0	18-07-14	HE	FOR APPROVAL
DESCRIPTION				
NAME				

Dimensions without tolerances

TOL ISO projektion



Item	qty	description	dimensions	material	remarks	cert
1	14	DOUBLE-END STUD	M36	8.8	-	3.1
2	28	HEX. NUT	M36	8	-	-
3	14	LOCK WASHER	Ø70x50	S235JR	-	-
4	14	BUSHING	Ø68x35	S235JR	-	-
5	4	BOLT	M16x30	8.8	-	-
6	12	HEX. NUT	M16	8	-	-
7	24	WASHER	M16	CS	-	-
8	4	BOLT	M16x150	8.8	-	-
9	2	SOCKET HEAD BOLT	M12x120	8.8	-	-
10	2	BOLT	M12x40	8.8	-	-
11	2	WASHER	M12	CS	-	-
12	4	BOLT	M30x240	8.8	-	-
13	4	HEX. NUT	M30	CS	-	-
14	8	WASHER	M30	SS	-	-
15	1	NAMEPLATE ARES	140x100x3	SS	-	-
16	4	RIVET	Ø2.4 L=8	SS	-	-
17	-	HE PLATE	-	-	-	3.1
18	-	GASKET	-	-	-	-
19	4	WEDGE ANCH. BOLT	M30 L=250	8.8	-	-
20	4	NUT	M30	8.8	-	-
21	4	FLAT WASHER	M30	CS	-	-
22	1	FOLLOWER ENDPLATE	2605x1140x65	S355 J2G3	-	3.1
23	1	HEAD ENDPLATE	2865x1140x100	S355 J2G3	-	3.1
24	1	CARRY BAR	IPN 220	S235JR	-	-
25	1	CARRY BAR SUPPORT	IPN 220	S235JR	-	-
26	2	PLATE	220x98x10	S235JR	-	-
27	1	GUIDE BAR (SQUARE TUBE)	70x70x6	S235JR	-	-
28	2	PLATE	56x56x15	S235JR	-	-
29	1	SUPPORT COLUMN	2940x295x10	S235JR	-	-
30	1	BASE PLATE	350x150x25	S235JR	-	-
31	2	ROLLER	Ø100 L=100	HARD BLACK PLASTIC	-	-
32	1	ROLLER	200x80x70	S235JR	-	-
33	4	BOLT	M16x110	8.8	-	-
34	1	BOLT	M24x170	8.8	-	-
35	1	HEX. NUT	M24	8	-	-
36	2	WASHER	M24	CS	-	-
37	2	ANGLE	L70x70x7 L=425	S235JR	-	3.1
38	4	NOZZLE CONNECTION	-	-	-	-

PART LIST

Designed by	Date	Approved by	Date	Revision no.	Revision Text	Format	Scale
HITARD		A. YABAU		0	FOR APPROVAL	A1	1:20+VAR.

DESCRIPTION:
PHE MODEL: AWG12 PN10 L=2500 ± 4000 MM
GENERAL ARRANGEMENT

Rev. date 18-07-14 Rev. by HE Drawing no. AWG12-20010-01 Sheet 1 OF 1